



armtechnique.com

ABOUT ARM







As the R&D arm of ARM Machine & Engineering, the third-generation banner-carrier of a family-owned mechanical engineering company founded in 1961, ARM Technique offers cutting-edge technical solutions to fellow innovators and inventors alike in the E.V., robotics, automation, high-tech surveillance, AI-powered security systems, defense and aerospace sectors.

Building upon a successful, decades-long track record of contracting work in design, precision manufacturing, assembly and surface treatments, ARM has launched its two flagship product lines to support the advancements in some of the most inspiring and fruitful engineering ecosystems of Industry 5.0.







INNOVATION



PRECISION



RELIABILITY

CAPABILITIES





Precision Machining



Mechanical Assembly



R&D and Design



Specialty Chemicals



Painting and Coating

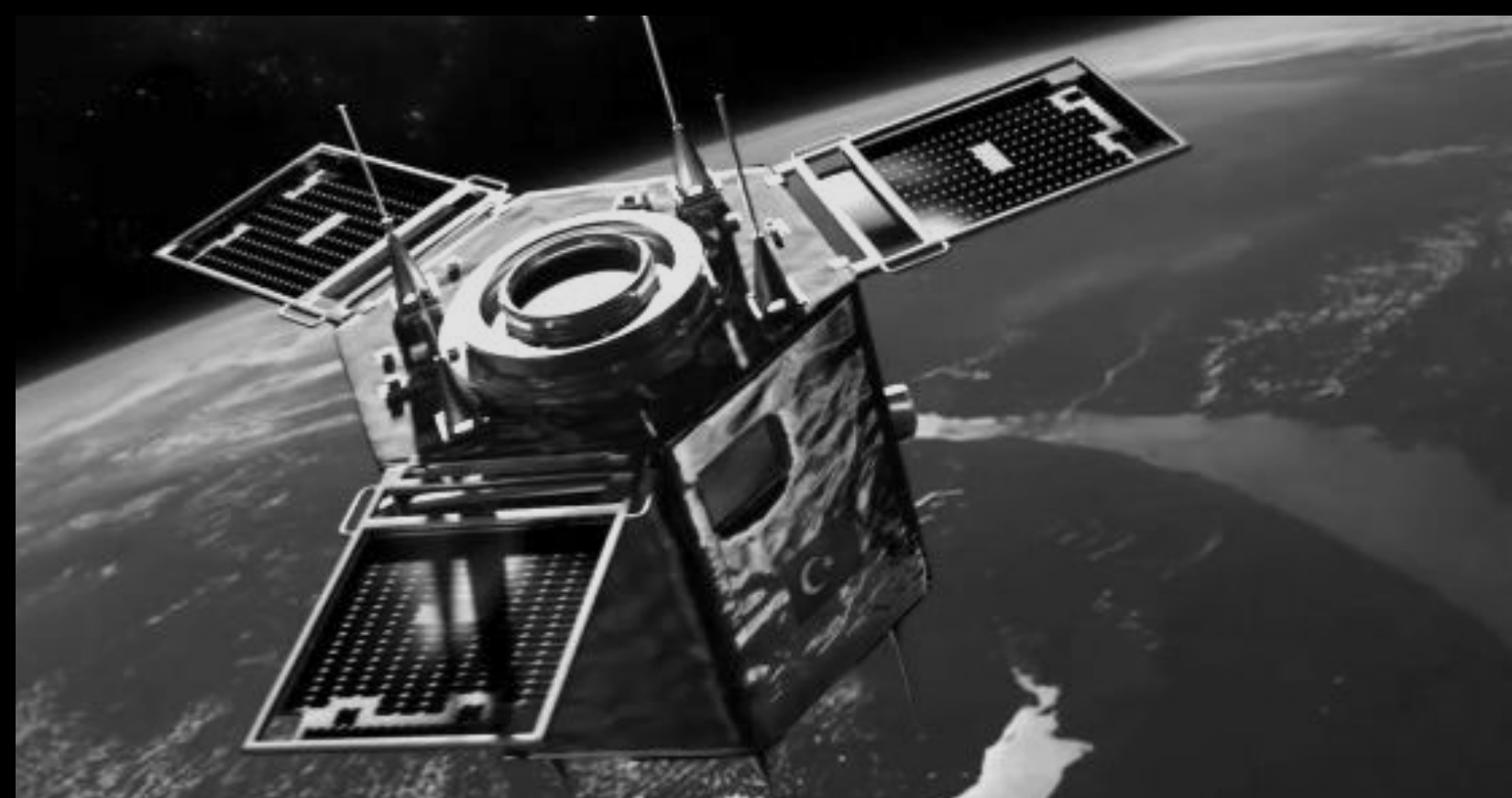
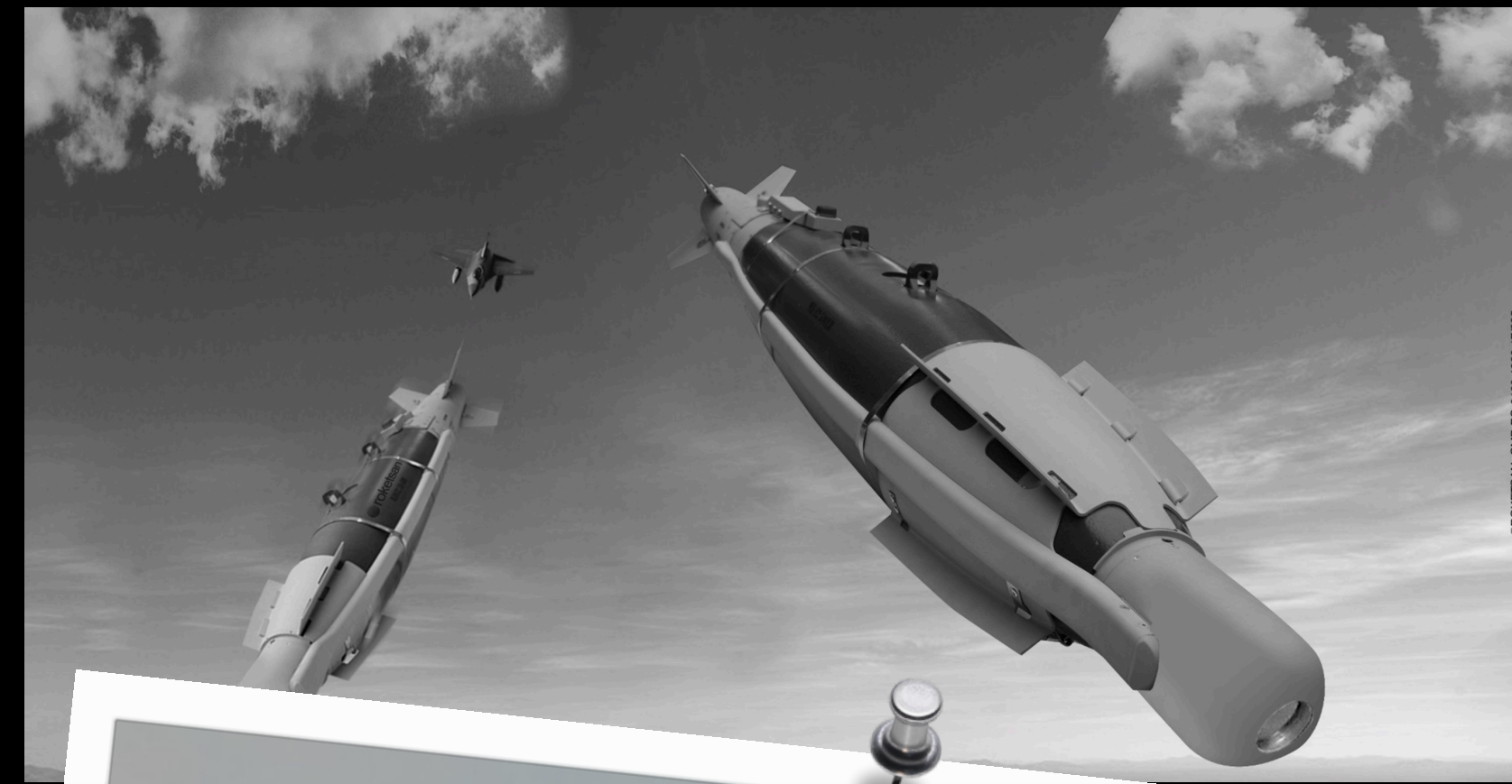
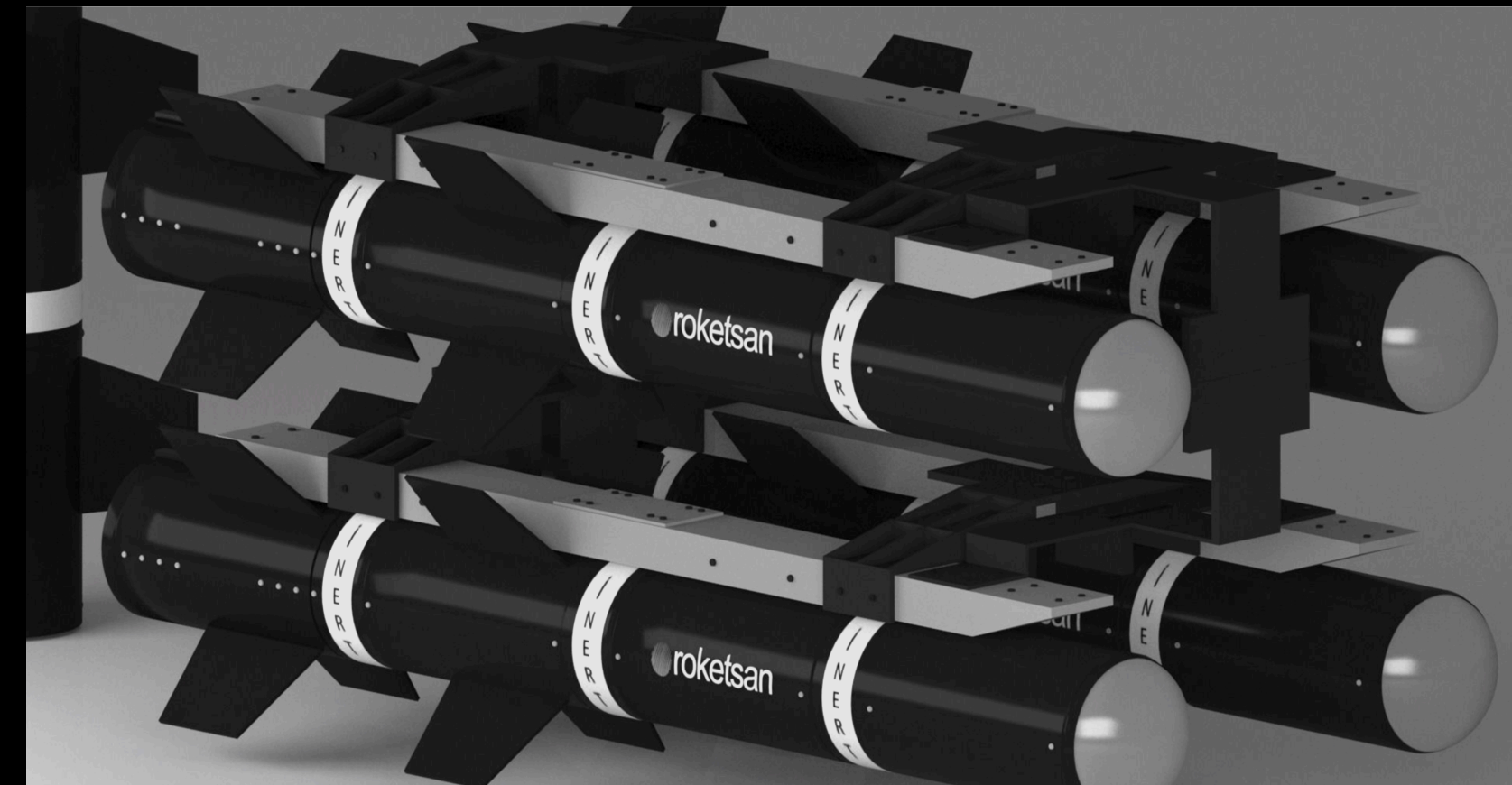


System Integrations

REFERENCES







OUR PRODUCTS





 **SOWA**

High-Tech Surveillance
Systems and Hardware



ROTATHOR

High-Torque Compact Electric
Motor and Magnetic Coupling

୦୦୦୦





 **SOWA**
Tripod

 **SOWA**
Pan-Tilt

 **SOWA**
Slip Ring

SOWACAM

Civil Sectors / Security

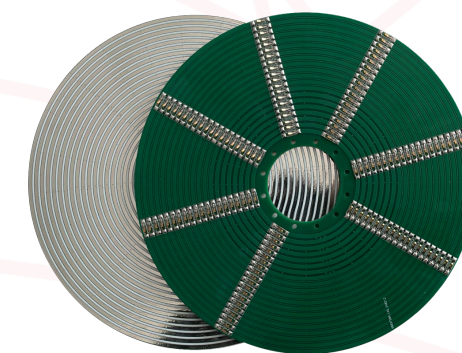
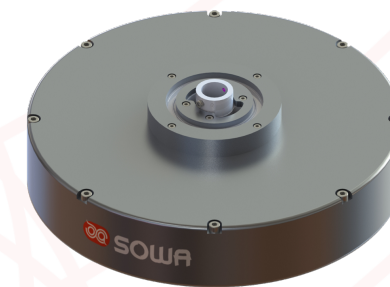
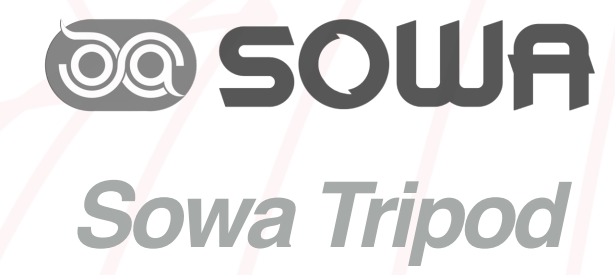
KUZGUN
KurtGözü

Domestic Defense Sector

KARASU

Global Defense Sector







- SOWA™ features HD thermal cameras, **the Sowa Cams** compatible with a wide range of surveillance systems, (border, port/coastal and airport protection, private facility security, marine, field, airborne/drone military operations) offering laser target designator and rangefinder, target tracking and positioning, distance and coordinates calculation, image stabilization, weather & terrain awareness, auto zoom & focus, broadcasting and remote control.
- ARM Technique's very own SOWA™ **Field Tripod** is the ultimate complement to the Sowa Cam series, born out of the necessity of an ultra durable, diehard steady, heavy duty tripod. The Sowa Tripod is designed specifically to be able to carry these high-tech pan-tilt cameras out in the field on rough terrains and unpredictable conditions, supporting precision surveillance operations.
- SOWA™ **Disc Over 360° Slip Ring** is the cornerstone of seamless power and data transmission in advanced robotic and machinery systems. Entirely customizable based on preferred radius and power capacity, the Disc Over 360° enables uninterrupted communication between rotating and stationary components, ensuring smooth and silent operation, cost-efficiency and optimal performance.





- While our Sowa Cams line supplies the Sowa technology to the civil sectors, *Kuzgun* and *Karasu* are the newest lines of products under the Sowa Cams line, specifically designed to cater to our clients in the defense industry. Raven is unique in nature due to its obvious collaboration with another animal species: the wolf.



- Flocks of ravens hunt together with wolf packs. Ravens lead the way and show the pack where the prey is headed, and in return, the wolves protect the feeding ground in the aftermath of the hunt so that the ravens can eat the leftovers safely. Thanks to this one-of-a-kind inter-species relationship, Kuzgun™ ("kuzgun" literally means *raven* in Turkish) gave its name to the high-tech camera systems of ARM Technique that are designed to support armed security and military defense operations in the field through tactical surveillance from higher ground stations and from the air. Kuzgun's counterpart for the global sector is Karasu™, meaning *raven* in Japanese.



KARASU カラス



KUZGUN

KURT GÖZÜ







ROTATHOR

rotathor.com



Rotathor Electric Motor

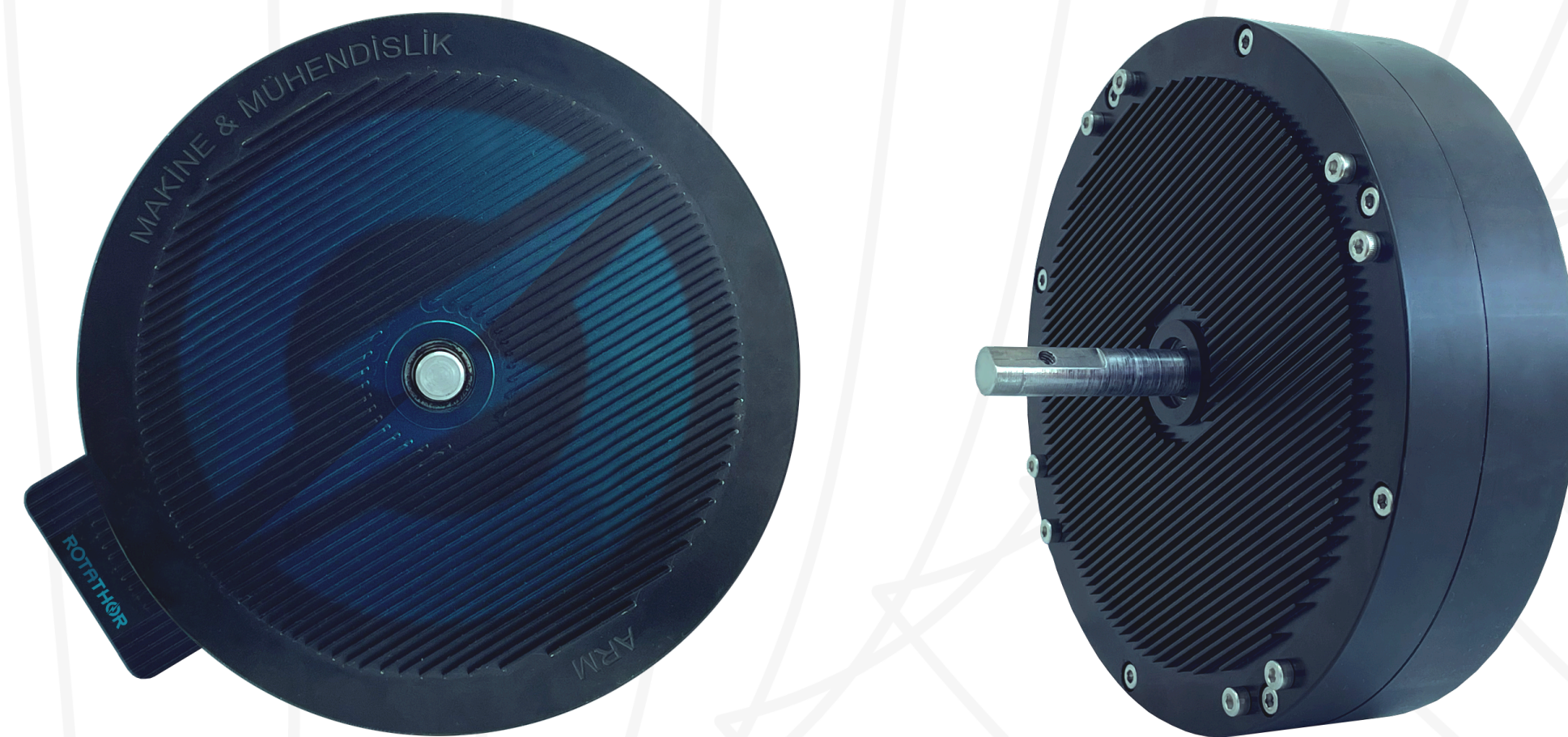
ROTATHOR™ Drehmoment BLDC Axial Flux Motor is poised to become a game-changer in the compact stator motors space. ARM's unique technology allows significant levels of torque generation within a compact body, and limitless power options based on its customizable, modular Scalable Pancake design. It works underwater, has a long lifespan and it is easy and cost-efficient to maintain and repair.

Rotathor Magnetic Coupling

Utilizing magnetic fields to transfer torque from one shaft to another without physical contact, *ROTATHOR™ Kontaktfrei* Magnetic Coupling ensures smooth, efficient and reliable performance in a wide range of industrial applications. Say goodbye to mechanical wear, overheating and maintenance issues, and welcome (up to 50%) energy conservation, 97% transmission efficiency and a long, cost-efficient lifespan.

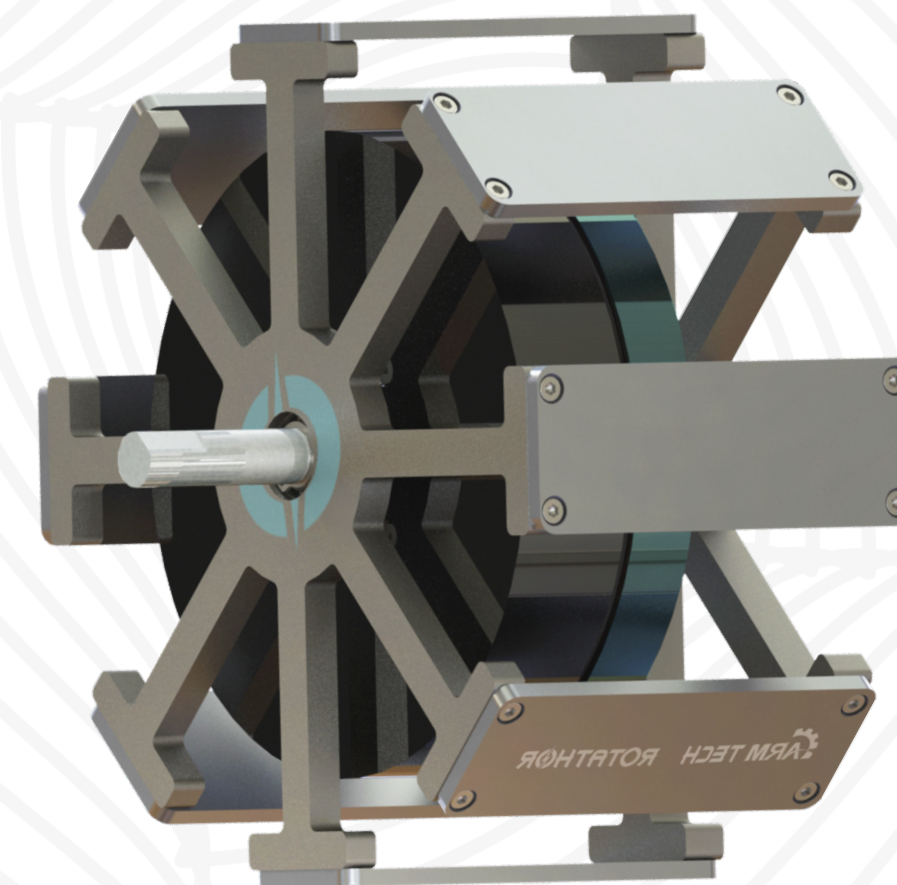
ROTATHOR

Drehmoment



ROTATHOR

Kontaktfrei



Thank you

• info@arm-makine.com

• armtechnique.com

• arm-machine.com

